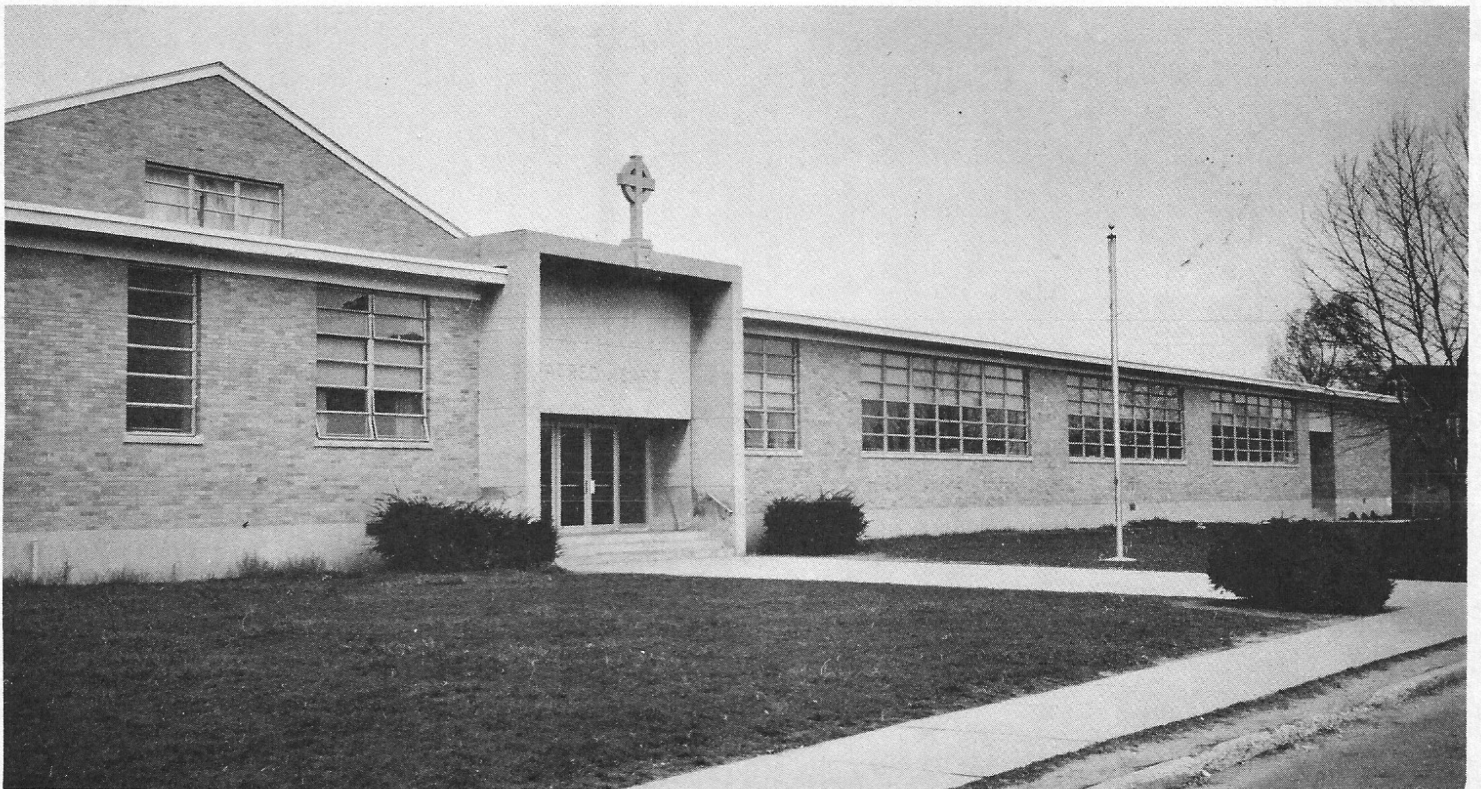


Sacred Heart School

SOUTH PLAINFIELD, N. J.



HANDBOOK

1972-73

LETTER TO PARENTS

Dear Parents,

- 1) The purpose of our school is to equip pupils with the finest in knowledge, both spiritual and secular. The faculty joins me in taking this opportunity to welcome you and your children to another scholastic year at Sacred Heart School. We look forward to working with you in an atmosphere of understanding and cooperation in the education of your child.
- 2) Whenever parents meet at a parish activity, at social events, or even in a supermarket - the conversation is almost certain to turn to the education of their children. They are interested in what goes on in school, what is expected of them and how they can participate in the educational process. Most of them recognize and are willing to accept their responsibilities in the education of their children in accordance with nature and with the Catholic philosophy of education.
- 3) Remember that our school functions for your child. The total development of the child cannot be attained by us alone since you, his parents, are the true educators.
- 4) When there exists an understanding between school and home and when regulations are mutually honored and respected, then, there develops in the child's mind a sense of security which is the basis of all natural and supernatural growth. At the same time, our combined efforts encourage each child to be a good member of his family, a Christian witness to all he encounters, and a loyal American.
- 5) To assist our childrens' parents in fulfilling their responsibilities, it is our aim in presenting this handbook that we acquaint them with those duties requested of them.
- 6) Let us keep these objectives in our mind as the school year progresses. The child becomes largely what he or she is taught and consequently, we must watch what we teach the child and how we live before the child.

Sincerely yours,

Sister Annette Duignan

Br. Annette Duignan,
Principal

Forward

Sacred Heart School, South Plainfield, New Jersey, is a Catholic Elementary School, which provides a Christian environment for the academic education of youth under the direction of the Sisters of Mercy of North Plainfield, New Jersey.

Philosophy of Sacred Heart School

The Sacred Ecumenical Council has considered with care how extremely important education is in the life of man and how its influence ever grows in a social progress of this age.

Pope John XXIII in his Encyclical entitled "Mater et Magistra" states, "Since all Christians have become by rebirth of water and the Holy Spirit a new creature so that they should be called and should be children of God, they have a right to a Christian education." This education does not merely strive for the maturing of a human person but has as its principal purpose this goal that the baptized, while they are gradually introduced to the knowledge of the mystery of salvation, become ever more aware of the gift of faith they have received, and that they learn to worship God the Father in spirit and truth, especially in liturgical action, and be conformed in their personal lives according to the new man created in justice and holiness of truth.

True education aims at the formation of the human person in pursuit of his ultimate end by which human and religious development can be imbued with the spirit of Christ, and at the same time promote for all peoples the complete perfection of the human person, the good of an earthly society and the building of a world of which man is an integral part.

In total conformity with the spirit of Vatican Council II and guided by its Declaration on Christian Education, our philosophy is based on these principles:

OBJECTIVES OF OUR SCHOOL

1. To place strong emphasis on intellectual values and to appeal to all to strive to achieve the highest development of the human mind.
2. To develop a mature sense of responsibility toward enabling their own lives through constant effort and toward pursuing authentic freedom.
3. To weigh moral values with an upright conscience, and to embrace them by personal choice and to know and love God more adequately.
4. To develop harmoniously their physical, moral, and intellectual endowments so that they may grow into manhood according to the mature measure of Christ and devote themselves to the upbuilding of the Mystical Body.
5. To provide positive and prudent sex education.

6. To set forth a Christian understanding of marriage that emphasizes its sacredness and its responsibility to defend the dignity of the family.
7. To provide experiences which will develop knowledge, appreciation, and habits to yield a character equal to the contingencies of fundamental Christian living in American democratic society.
8. To provide a physical fitness program which will enable the pupil to live happily and work well.
9. To promote good relationships through recreational activities ensuring proper use of leisure time.
10. To develop desirable character traits in pupils by employing all school activities, as a means of training the pupils in self-control, honesty, loyalty, cooperation, cheerfulness and courtesy.

RELIGIOUS SISTERS OF MERCY

The Congregation of the Religious Sisters of Mercy was founded by Catherine McAuley in Dublin, Ireland, in 1831. Shortly thereafter, a group of Sisters of Mercy came to the United States and eventually their missions spread throughout the country.

A mission was established in New Jersey in 1873 and the Sisters concentrated all their resources on education, at the request of the Bishop. In the Trenton and Camden Diocese, the Sisters of Mercy staff schools on the elementary, secondary and college levels. Our mission in South Plainfield began in 1953.

The life of a Sister of Mercy is a combination of the active and contemplative life and, in her daily prayers, she remembers those whom she "visits, relieves and instructs," as well as benefactors and all who request a remembrance.

ADMISSION OF PUPILS

FIRST GRADE: In accordance with Diocesan regulations, children entering first grade must be six by October 1.

Pupils must present certificates of Baptism (not necessary if child was baptized in Sacred Heart Church), certificate of vaccination, D.P.T. series, polio and measles vaccine.

Registration dates are announced in the Parish Bulletin prior to the given dates.

Pupils registering for the first time must bring a transcript of marks from the school which they attended previously.

CHILDREN LEARN WHAT THEY LIVE

"If a child lives with criticism, he learns to condemn,
If a child lives with hostility, he learns to fight,
If a child lives with fear, he learns to be apprehensive,
If a child lives with pity, he learns to feel sorry for himself,
If a child lives with jealousy, he learns to feel guilty.

If a child lives with encouragement, he learns to be confident,
If a child lives with tolerance, he learns to be patient,
If a child lives with praise, he learns to be appreciative,
If a child lives with acceptance, he learns to love,
If a child lives with approval, he learns to like himself,
If a child lives with recognition, he learns that it is good to have a goal,
If a child lives with fairness, he learns what justice is,
If a child lives with honesty, he learns what truth is."

A CREED FOR PARENTS

Let our children learn to be honest, both with themselves and with others. This is the basic human value. In its simplest terms, it is the capacity to distinguish clearly between what is and what is not, and thus to deal effectually with reality.

Let our children learn to love truth. No matter whence it comes, so that it be truth let them freely accept it, even when it goes against them. If they do this, they will not be much hampered by prejudice, for wherever truth can enter, prejudice cannot long remain. However, by fidelity to truth the mind is nourished and becomes well grown.

Let our children find courage and discover that they are stronger than the things of which they are afraid. Courage in our dealings with our own lives, courage in standing for good against evil, courage to remain loyal to a deep conviction at whatever cost.

Let our children cultivate breadth of humanity; a cordial welcome not merely for the factional, the provincial, the sectarian when they are good, but for whatever is beneficial to the human race no matter whence it comes.

Let our children cultivate kindness, for it does not often come without cultivation, and it is needed: the world is too harsh.

Let our children cultivate humility. Let our children learn that they are like other people, even the people they tend to despise; and that there is good and bad in all of us, and that each of us must make a hard struggle to bring the good on top. Then, because of their own lost battles, they will acquire a gentle wisdom and walk softly where other people might get hurt.

APPOINTMENTS

Mutual understanding between home and school plays an important role in the development of your children. We would like to suggest the following points that will, if followed, produce a harmonious parent-teacher relationship and a level of understanding that is essential.

1. When in doubt regarding some regulation, please contact the school to clarify your question, (756-0632) or the convent (756-0631).
 2. The Faculty will be very happy to make arrangements for a conference with parents at a time convenient for both parties. Arrangements may be made through the office or by a note to the teacher.
 3. Parents are not permitted to disturb a member of the teaching staff or the students during the day unless an emergency arises and office permission is obtained. Teaching hours are too precious to be interrupted for the delivering of forgotten objects. Lunch periods are too short to discuss any major school problems with any teacher.
 4. Before school in the morning or afternoon is not a good time to speak with the teachers, since this is a time when the teachers must give the pupils her undivided attention.
 5. An appointment with the Principal can be arranged by calling the school secretary, or directly to the convent. (756-0631)
- Parents are asked to contact the lay teachers as previously outlined and not to contact their homes.
6. Appointments may be made with the Principal to discuss any particular problems you may have with your child.

ASSEMBLIES

Assemblies are scheduled periodically for the students' educational enrichment. Assemblies provide an opportunity for children to personally experience public speaking and additionally, they teach children proper audience behavior and appreciation of another child's talents.

We strongly urge the teachers of all grades to attempt to provide for a class program sometime during the course of the school year.

ATTIRE

Grades 1 through 6: Orlon/wool pleated plaid jumper, tailored to individual measurements insuring proper fit with allowance for growth and should give an average of two years hard wear. A regulation "Parochial School" type blouse is also to be worn with matching "beanie" and tie. Grey knee or ankle sox are a "must". For the younger children grey lectards will be available for colder weather and may be worn by those preferring them.

Grades 7 and 8: Two piece uniform consisting of same Orlon/wool pleated plaid skirt, solid grey vest and white uniform blouse. Grey knee sox. (The 1 through 6 type uniform may be used for the skirt of the 7 and 8 uniform and the vest made at home if desired.)

Boys must wear jackets: A maroon jacket with School emblem is preferred. However any color dress jacket will be acceptable. A white shirt with a maroon School tie and good trousers complete the uniform. No blue jeans or bright colored bell-bottoms are permitted.

Gym uniforms are also a requirement, consisting of maroon shorts and white blouse for girls and maroon shorts and School "T" shirts for boys.

NO UNIFORMS ARE REQUIRED TO BE WORN THE FIRST WEEK OF SCHOOL.

Items required may be purchased through "Fred Lippitt", 117 Watchung Ave., Plainfield.

All school clothes and bookbags should be marked very plainly with the name and the grade of the child. This refers also to rubbers, umbrellas and boots. It is better for your children to wear raincoats and hats rather than carrying umbrellas. The school does not accept responsibility for lost articles.

ATTENDANCE

Absence from school interferes with expected progress. Illness of the pupil, death in the family, quarantine, and exceptional requests such as affect the child are the only legitimate excuses for absence from school.

All absences must be explained by a note signed by the parents and given to the classroom teacher upon the child's return to school. These notes must be kept on file for the entire school year.

No child may be dismissed from school during the school day unless the parent requests this permission from the Principal in written form.

If a child oversleeps, send him to school. It is better to be late than absent. A written explanation should be sent.

Parents are to call the school office before 9:00 a.m. to report any absence. (756-0632)

School hours are from 8:00 a.m. to 2:00 p.m. daily so please have your child in school on time.

In case of medical advice, please contact Mrs. Anne McShane, the school nurse.

BOOKS

CARE

If any school textbook is destroyed or defaced by a child, payment must be made to replace the book. Book covers are required on all books. In order to preserve books, the children are required to carry book bags or a plastic tote bag to protect these books.

FEE

Book bills are sent home yearly for all workbooks. This includes all workbooks, mimeographed units, SRA testing fee, mastery tests, Holy Childhood fee and a weekly subscription to a classroom reading periodical. The State will pay \$10.00 toward the book fee, provided the child has been enrolled for the entire school year. This check comes during the month of April to your home.

CAFETERIA

Hot lunches are provided at the nominal cost of \$.40 for a complete lunch, which includes a dessert. School menus are printed weekly in the So. Plainfield Reporter. Lunch tickets will be available for anyone interested.

Milk money should be paid at the time of purchase which is \$.05 a day.

Please instruct your children about good eating habits, such as using a napkin, sitting properly at the table and cleaning off his place at the table.

Adequate supervision is provided by teachers in the Cafeteria and on the playground.

We have two lunch periods a day:

11:00 to 11:45 - Grades 5 to 8

12:00 to 12:45 - Grades 1 to 4

Many physical activities will be provided during the lunch recess in the yard. Also, games are used, should the weather require the children to stay indoors.

CARD PARTY

There are five card parties conducted yearly, four sponsored by two grades each, and the Sister's Card Party usually held in June. Each family is expected to purchase one ticket for each affair except if your child is in the sponsoring class when two tickets are sent home. Exception is if you have a child in each of the sponsoring grades, then only one ticket is given to each child. If you are unable to attend the card party, the ticket may be returned to school with your name and the child's grade written on the reverse side of the ticket for participation in the non-player drawings.

Dates of the Card Parties are as follows:

October 17	- Grades 8 - 4	April 10	- Grades 5 - 2
December 5	- Grades 7 - 1	May 8	- Sister's Card Party Executive Board P.T.A.
February 13	- Grades 6 - 3		

CHANGES IN TELEPHONE AND ADDRESSES

We ask that parents notify the class teachers and the school office concerning any changes in the telephone numbers and addresses immediately.

This is very important both in keeping our records up to date and in case of an emergency. Much confusion can take place if this matter is not taken care of immediately.

DISCIPLINE

It is the responsibility of the school to develop self-control just as definitely as it is the school's responsibility to help the child develop the ability to read. A sound policy of correction must be based on a clear understanding of motivation as well as a clear understanding of the nature of the child.

Order is essential to the effective management of any school. It is maintained not only by a good teaching staff, efficient administration, and good educational programs but, also, by the development of rational self-control in the child.

Class teachers have the authority to detain pupils one hour, on any given day - giving a day's notice - for disregard of class or school regulations.

Detention is held every Monday from 2:15 p.m. to 3:15 p.m.

When any misbehavior occurs and a parent does not understand the punishment involved or the action taken in correcting the child, he should contact the classroom teacher or the Principal. I would rather you question at the time in order to help your child.

School offenses will be handled in accordance with the severity of the act. Delayed disciplinary measures do not prove effective. Detention may be given by any teacher to any child who violates rules.

The school cannot be held responsible for the conduct of pupils off the school grounds.

DISCIPLINARY GUIDE
(Diocese of Trenton)

Administrators must be consistent in all disciplinary actions.

<u>Offenses which merit expulsion.</u>	<u>Offenses which shall merit suspension</u>	Offenses which shall merit appropriate action from the Principal
a. Weapons	a. Fighting 3-5	a. Cut class-1 detention for each cut.
b. Continued and wilful defiance of authority.	b. Habitual use of profanity. 2 - 3	b. Minor class or school disorder - 1 to 5 detentions
c. Continued and willful disobedience	c. Disobedience - not continued and wilful. 1 - 2	c. Being tardy to class - own fault - 1 detention each time.
d. Physical assault	d. Frequent tardiness to school or class with no attempt to correct. 1-2	d. Any offense considered to be detrimental to the educational process
e. Lack of interest - continually violating school rules with two previous suspensions	e. Frequent class cutting. 1-2	e. Any offense under Column 11 that is not of such a serious nature as to merit suspension
f. Teacher Assault	f. Cutting of detention. 2-3	f. Improper dress 2 to 3 days
g. Arson	g. Insolence 2-3	f. Improper dress 2 to 3 days
h. Gross disorder (inciting mob action)	h. Unauthorized smoking 5	f. Improper dress 2 to 3 days
i. Defacing or destruction of school property	i. Any offense under Column 1 that is not of such a serious nature as to merit recommendation for expulsion	f. Improper dress 2 to 3 days
j. Breaking and entry	j. Presence on school grounds or in building while marked absent 3	f. Improper dress 2 to 3 days
k. Serious moral problems	k. Pornography 2-3 l. Continued improper dress either immodest or not meeting rules 2-3	f. Improper dress 2 to 3 days
	Numbers indicate the number of days of the suspension	

EMERGENCY CLOSING

In the event of emergency holidays due to inclement weather, announcement will be made over local radio station WERA, Plainfield and WCTC, New Brunswick.

It is the policy of our school to follow public school closings. Please do not call the school, convent or rectory. If school is in session, we ask parents to use their own good judgment and not jeopardize the safety of the child. Therefore, if So. Plainfield Public Schools are closed, we are included.

Parents who transport their child by car are asked to use caution when approaching and leaving the playground. Only buses are to enter yard by way of So. Plainfield Ave. and exit by way of Randolph Ave.

EXTRA-CURRICULAR ACTIVITIES

We have several activities in which the students may participate if they meet the academic and social requirements. It is our hope this year to offer more variety in these extra-curricular programs. We do not intend to place total emphasis on these activities, and we ask you to follow the same practice; however, we like our students to participate in them because, through such participation, they develop a well-rounded background. Notice will be issued as soon as programs are formed.

Altar boys	Glee Club
Art Club	Physical Education
Cheerleaders	Piano Lessons
Basketball (Girls' & Boys')	Newspaper
Civics Club	Reading Clinic
Drama Club	Student Council
Science Fair	Spanish & French Clubs
Algebra Club	Yearbook

FIELD TRIPS

Periodically, students are taken on field trips as a part of their educational program. Such trips are made only with the permission of their parents. When such trips are being planned, permission slips will be sent home to be signed and returned to school.

All trips are supervised by the classroom teacher and other adults. These are completely up to the classroom teacher but are strongly recommended by the Principal.

Walking trips within the school area, which are a part of school work, will be taken without the usual parental consent.

FINANCES

Insurance is offered by the school but is strictly optional. Information on this policy is issued at the beginning of the school year. Please instruct your child to report all accidents immediately to the school nurse or to the office in order to be covered completely.

Tuition for Sacred Heart School is \$90.00 a year per child, \$125.00 a year if the family has two students and \$140.00 per family. Out of the parish families, \$125.00 per child, \$150.00 for two children and \$175.00 per family.

Tuition must be paid to the rectory either by mail or in person. Payable one-half by August 1st the balance on February 1st. Make checks payable to Sacred Heart School.

All checks should be enclosed in an envelope and labeled with the child's name, grade and purpose. Receipts will be issued when "cash" is paid only.

FIRE DRILLS

According to New Jersey School Laws, each school is required to hold at least one fire drill each month. Sacred Heart will conform by the following schedule:

At least two drills during the months of September, October, November, March, April and May. At least one drill is held during months of December, January and February.

The children have been trained to walk in SILENCE to their designated locations.

HEALTH

If your child is to progress favorably in school, he should be strong and healthy so that he is able to attend school daily. However, it is not fair to your child or to the other children if he comes to school when he is ill. We ask you to protect all concerned by keeping your child at home when he is ill.

Help your child to practice good health habits which we attempt to enforce at school.

If your child contacts a communicable disease, do not permit him to return to school until your physician gives you permission to do so. This is a state law and a note is required from the doctor.

Our school is provided with a nurse who is in school daily. The school doctor, assisted by the nurse, examines the children annually.

A child may not be sent home without the knowledge of the Principal. The office will contact the parent who must come for the child. All cases of illness occurring on school premises occasion such contact.

HOMEWORK

In accordance with the principles of good education, the school's policy is to assign homework, either written or study.

Homework sheets are given for Grades 1 and 2.

Kindly schedule a homework period for your child each evening and make certain that the work is completed neatly and legibly. Parents should refrain from doing their child's homework, but parents should supervise home study and train the child to present his work to them for approval. Advice and direction are often times needed, but the child develops self-confidence and a sense of responsibility when working independently.

If definite study has not been assigned for the night, it is advisable for the student to review drill papers in preparation for the next day's work or testing.

Neglect of homework is a serious offense and we ask that you do not offer excuses unnecessarily. If a child has neglected homework, correct him and make him realize his responsibilities.

Homework will NOT be given on PTA nights, in order that all work books and notebooks may be left in school for parent's inspection. It is also suggested that no assignments be given over weekends, except in extreme cases.

LIBRARY

Children of all grades have a library period each week to encourage independent reading. Our library contains 2000 volumes suitable for children in all grades. Most of these books have been procured through Federal Aid under the Title 11 Program. Some have been donated by generous parents.

The library is under the direction of volunteer mothers who check out, catalogue and repair the books for the students.

It is our intent to initiate new programs of independent study for our pupils and to broaden our present schedule so that all children will be trained in research work, especially in the fields of science and social studies.

PARENT-TEACHERS ASSOCIATION

The education of your child involves a cooperative enterprise between home and school. You, as a parent, are urged to contribute your suggestions and view points concerning the educational needs of your child. The most efficient means to carry out this privilege is to become a member of the Parent-Teachers Association and participate as often as you can do so. The objectives of the Association are: to bring teachers and parents into closer contact, to encourage the efforts of the teachers, to improve the surroundings of the children and, in general, to arouse the interest of the community in the welfare of the school. Therefore, every parent should support this prime organization by becoming an active member with paid membership dues.

Annual membership dues are \$2.00 and information will be issued concerning this at the beginning of the school year.

PTA meetings are held on the fourth Monday of the month in the school cafeteria. Prior to the meeting at 8:00 p.m., parents may visit the classrooms, observe their child's work, and confer briefly with the teachers. The time provided is from 6:45 to 7:45 p.m. If you wish to have a lengthy discussion with a particular teacher, we ask that you arrange an individual meeting.

After the business meeting, there is a planned program that is usually informative or entertaining. Refreshments are served after the business meeting.

Be sure to sign for your child's particular class, for the attendance award and trip sponsored by the PTA in June.

You are urged to join and become an active member of this group which focuses on one major interest....Your Child.

Calendar of Meetings

Back to School Night	September 18
Religious Education	October 30
Reading Problems	November 27
Children's Panel	January 29
Father's Night	February 26
Science Fair	March 26
Installation of New Officers	May 21

PHYSICAL EDUCATION

Physical education is an integral part of the total education process and has as its aim the development of physically, mentally, emotionally, and socially fit citizens through the medium of physical activities which have been selected with a view to realizing these outcomes.

At Sacred Heart every child is required to attend physical education class unless a physician's excuse is presented to the Principal, Nurse or physical education teacher. If a child becomes ill during gym day the school nurse may excuse that child from gym class.

There will be grades given to youngsters in Grades 4 through 8. These grades are based on a child's ability, attitude and preparedness.

REPORT CARDS

Report cards are distributed four times during the school year so that parents are informed of their child's success or failure to maintain grade level. We ask that you study your child's report card carefully and note any particular weakness so that you may guide the child in improving in this particular subject.

If a child is in apparent danger of failing, warning notices will be issued to his parents at the middle of each marking period.

If a report indicates that the pupil's work is not satisfactory, you should confer with the home-room teacher or the subject teacher as soon as possible.

Please remember that all children do not have the potential to be "A" students and that "C" is an average mark.

Marking Period Ends

November 10
January 19
March 23
June 8

Reports Distributed

November 20
January 22
March 26
June 15

SAFETY PATROL

In our school there is an organized Safety Patrol comprised of responsible and dependable students in the eighth grade. This program is conducted under the auspices of the state and local police departments. The Safety Patrol monitors the halls and corridors for the safety of all.

TESTING

Mental ability tests are administered to the pupils three times during eight years of elementary school in Grades 2-4-6.

Diocesan SRA Achievement Tests are conducted annually in Grades two through eight. This testing takes place at the beginning of the school year and is designed primarily for following a student's growth from year to year within each subject area. This testing is valuable because the scoring is scaled to provide useful information for the teachers in evaluating and continuing the improvement of a child's educational progress.

A readiness test is administered to the new first grade children each year.

Standardized reading tests will be given periodically throughout the school year to measure growth and progress in reading and phonetic skills. If you are told that your child is not up to grade level, it is advised that you provide extra help or enroll him in the Reading Clinic on Saturdays.

REMEDIAL AND ENRICHMENT CLINIC

The Clinic is designed to assist any child needing remedial work and/or desiring an enrichment program in reading or math.

Classes are held in Sacred Heart School on Saturday mornings from 9:00 to 10:15 (75 minute sessions). The fee is \$5.00 per session. Classes run for the duration of the school year (32 weeks).

Classes are limited in size (3 to 8 students per class). At the onset of the program each student is tested and a curriculum is designed based on the student's needs. Testing also occurs at the end of the program with the parents being informed of their child's progress.

All of our staff are certified by the State of New Jersey and have experience in this field.

For information on enrollment please contact G. Mingin (754-5284).

TRANSFERS

A child transferring to Sacred Heart School should present a report card as a basis for classifying ability, along with his Baptismal Certificate and health records. A transfer from the last school attended should be sent to school or brought by the child himself during the first week of admission.

Records are sent by Sacred Heart School when notified of a child's transfer to another school.

Parents of children who are moving out of South Plainfield transferring to another school should inform the Principal a few days in advance so that a transfer may be sent in due time to the new school.

TRANSPORTATION

Bicycles

Bicycle riders are expected to cooperate with school procedure by carrying out the following rules:

- 1) Bicycles are to be parked in the rear of the building in the racks provided for them.
- 2) Bicycles are permitted to carry one rider only and the child should ride with the traffic - not against the traffic.

Bus

Bus buttons will be issued to all eligible riders. Care must be taken to safeguard the button once it is given to a child. The number of the button corresponds with the name of the child on the eligible list. Mileage limits - Grade 1 to 4, one mile, Grades 5 & 6, 1½ miles, Grades 7 & 8, 2 miles.

Parents are reminded that proper conduct is expected of all children riding the bus. A driver's responsibility is a great one and he cannot be expected to discharge his duties well if he is distracted by annoying children. We reserve the right to prohibit any child from riding if he is reported for any misdemeanor more than once. This right has been issued by the Transportation Office of South Plainfield.

All students are expected to behave properly on the school bus. Good conduct is a reflection on both home and school training.

Children are not permitted to switch bus routes and neither can permission for this be given through the office.

Bus buttons must be worn by all bus riders.

Cars

If your child is brought to and from school by private car, it is imperative that the driver abide by school regulations regarding safety. Please do not block driveways or park in the area where buses will be coming or going. Please let the children out of the cars either on South Plainfield Ave. or Randolph Ave.

Walkers

Walkers are dismissed from school either by South Plainfield Ave. exit or by the Randolph Ave. exit. If you are to meet your child, please be aware what exit he uses.

TEACHERS AND CLASS REGISTRATION

<u>Class</u>	<u>Boys</u>	<u>Girls</u>	<u>Total</u>	<u>Teacher</u>
8-A	21	21	42	Sister Mary Kearney
8-B	21	20	41	Mrs. Michelle Geene
7-A	27	20	47	Sister Patricia Ann
7-B	26	20	46	Sister Kathleen Carr
6-A	18	20	38	Sister Ruth Holland
6-B	18	20	38	Miss Patricia Monsell
5-A	18	25	43	Mrs. Gloria Bruening
5-B	18	24	42	Mrs. Margretta Mohn
4-A	24	18	42	Mrs. Anne Restaino
4-B	18	24	42	Mrs. Sue Grap
3-A	17	20	37	Sister M. Edwardine
3-B	15	20	35	Miss Anne M. Stout
2-A	18	20	38	Mrs. Julie Warshany
2-B	15	24	39	Sister Ruth Ann Balas
1-A	11	16	27	Mrs. Lou Mack
1-B	<u>12</u>	<u>14</u>	<u>26</u>	Mrs. Gahan Schanck
Totals	297	326	623	

SACRED HEART PARENT - TEACHER ASSOCIATION

Mrs. Wm. Sheedy, President, 3332 Beverly Road 757-6014
Mrs. Joseph Baron, Vice President, 2346 Oxford Ave. 757-6423
Mrs. John Healy, 2nd Vice President, 3325 Beverly Rd. 757-3413
Mrs. Robert Golas, 3rd Vice President, 2311 Terrace Av. 755-8227
Mrs. Peter Lenhart, Recording Sec., 212 DeSepio Ave. 756-9537
Mrs. Kurt Kuberiet, Corresponding Sec., 1522 Windrew Ave. 561-2651
Mrs. Paul Pompa, Treasurer, 1321 Yurgel Drive 756-3972
Very Rev. Msgr. Edmund W. Kreger, Pastor 756-0633
Sister Annette Duignan, Principal 756-0632
Sisters of Mercy
Mount Saint Mary, Route 22, North Plainfield, N.J.